
A musical notation staff consisting of five horizontal lines. On the left side, there is a treble clef symbol. Below the staff, the letters 'T', 'A', and 'B' are stacked vertically, indicating guitar tablature. To the left of these letters, the letters 'e', 'H', 'G', 'D', 'B', and 'e' are stacked vertically, corresponding to the strings of a guitar.

A musical staff with a treble clef on the left. Below the staff, the letters 'T', 'A', and 'B' are stacked vertically, indicating guitar tablature. To the left of these letters are the letters 'e', 'J', 'G', 'a', 'B', and 'e' stacked vertically, corresponding to the six strings of a guitar.

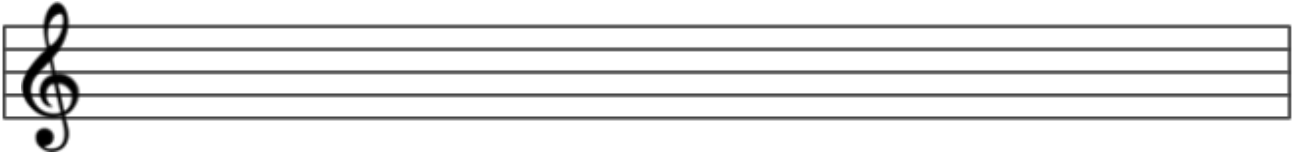
A musical staff with a treble clef on the left. Below the staff, the letters 'T', 'A', and 'B' are stacked vertically, indicating guitar tablature. To the left of these letters are the letters 'e', 'J', 'G', 'a', 'B', and 'e' stacked vertically, corresponding to the six strings of a guitar.

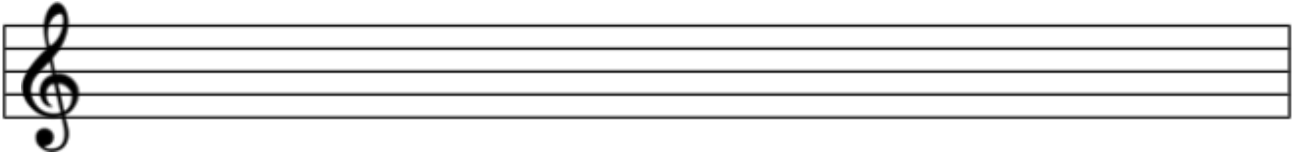
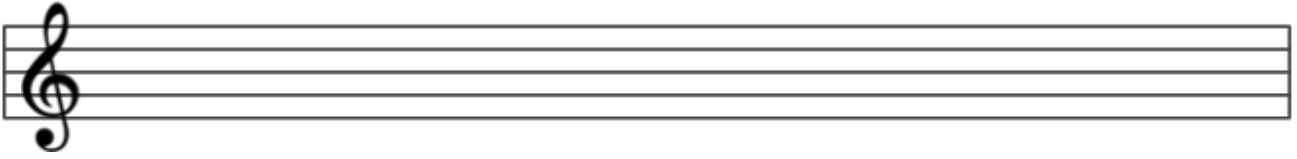
A musical staff with a treble clef on the left. Below the staff, the letters 'T', 'A', and 'B' are stacked vertically, indicating guitar tablature. To the left of these letters, the letters 'e', 'H', 'G', 'a', 'e', and 'e' are stacked vertically, corresponding to the six strings of a guitar.

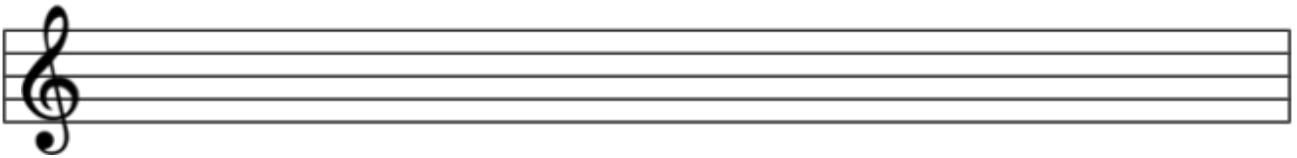
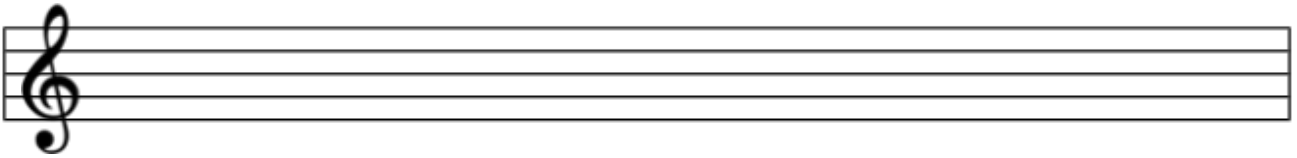
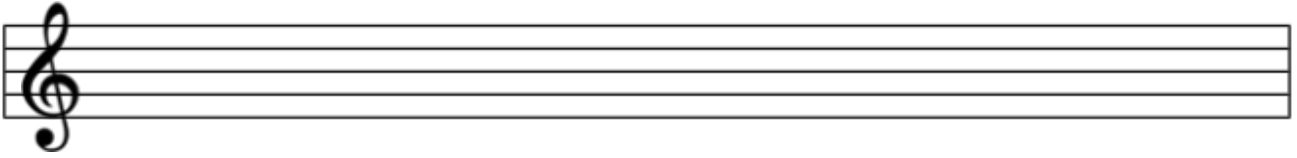
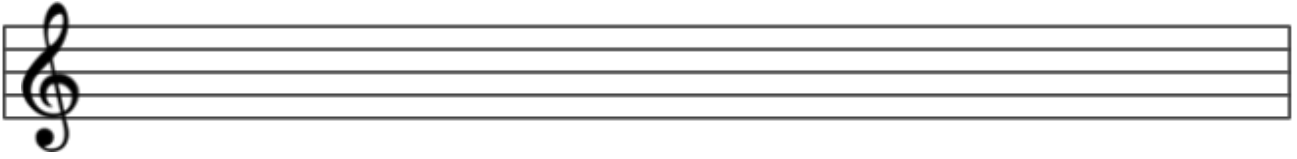
A musical staff with a treble clef on the left. Below the staff, the letters 'T', 'A', and 'B' are stacked vertically, indicating guitar tablature. To the left of these letters, the letters 'e', 'H', 'G', 'a', 'e', and 'e' are stacked vertically, corresponding to the six strings of a guitar.

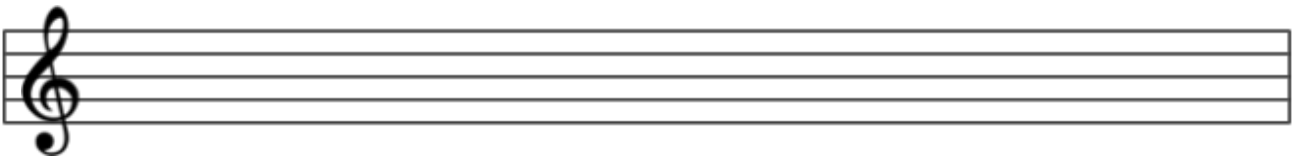
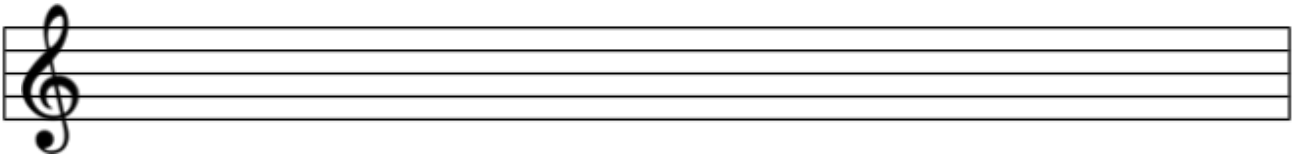
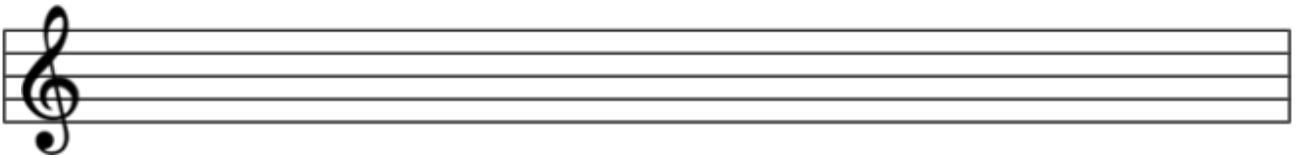
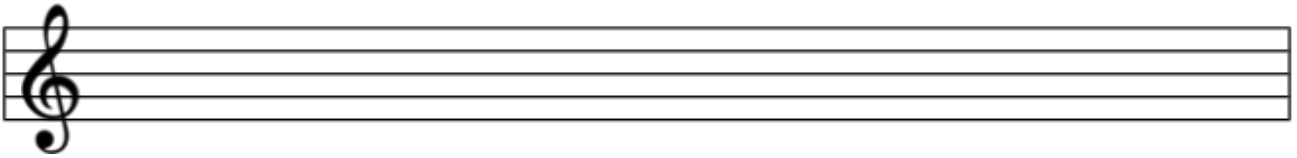
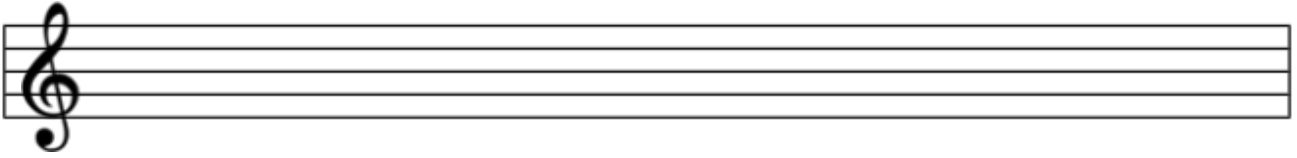
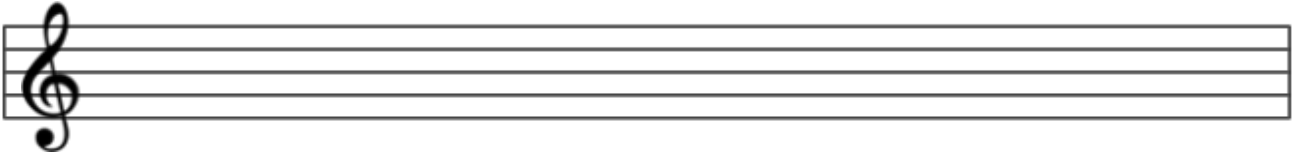
A musical staff with a treble clef on the left. Below the staff, the letters 'T', 'A', and 'B' are stacked vertically, indicating guitar tablature. To the left of these letters, the letters 'e', 'H', 'G', 'a', 'e', and 'e' are stacked vertically, corresponding to the six strings of a guitar.

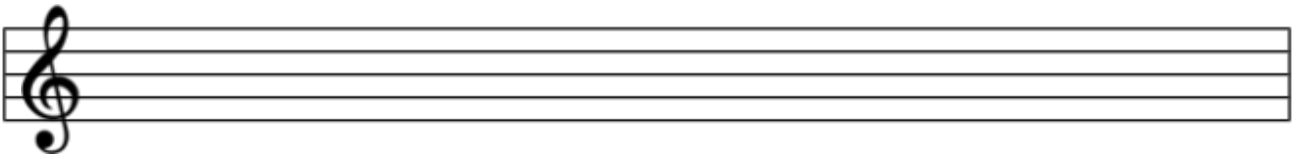
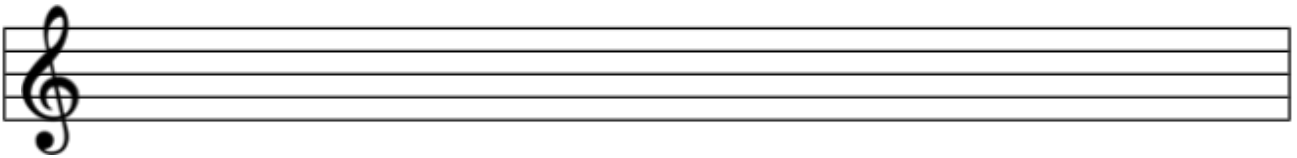
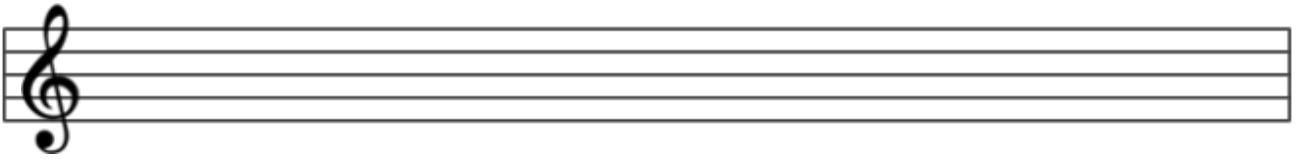
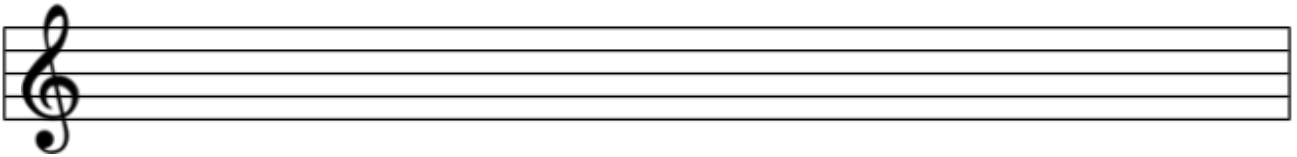
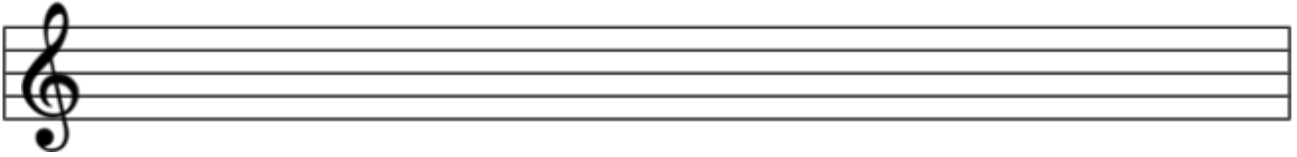
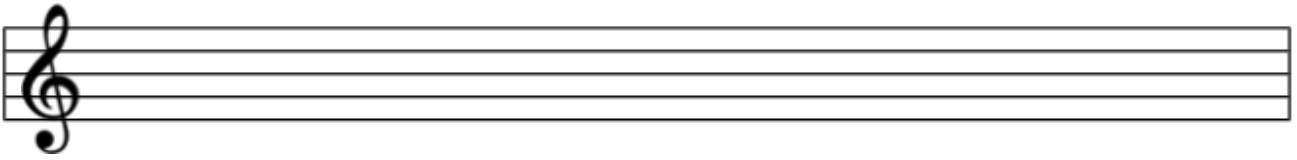
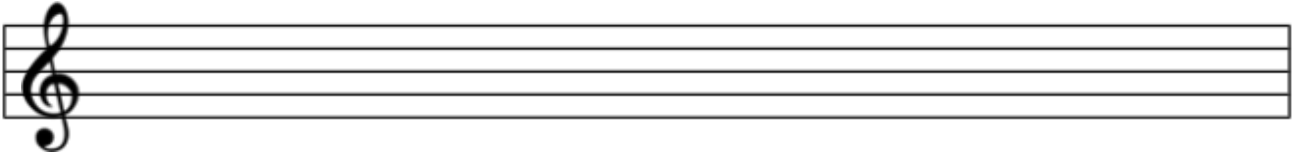
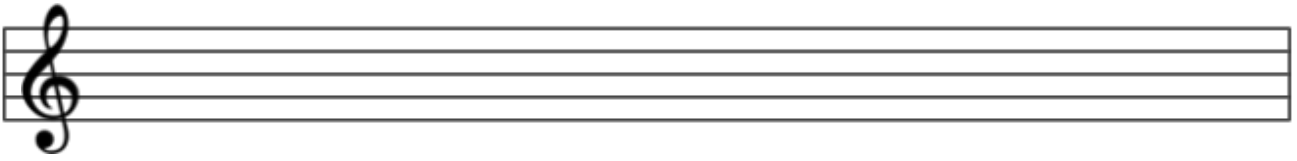
A musical staff with a treble clef on the left. Below the staff, the letters 'T', 'A', and 'B' are stacked vertically, indicating guitar tablature. To the left of these letters, the letters 'e', 'H', 'G', 'a', 'e', and 'e' are stacked vertically, corresponding to the six strings of a guitar.

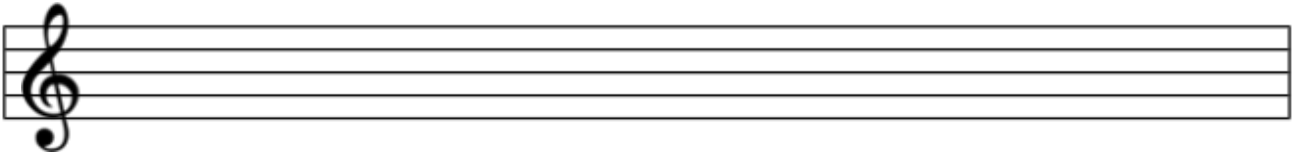
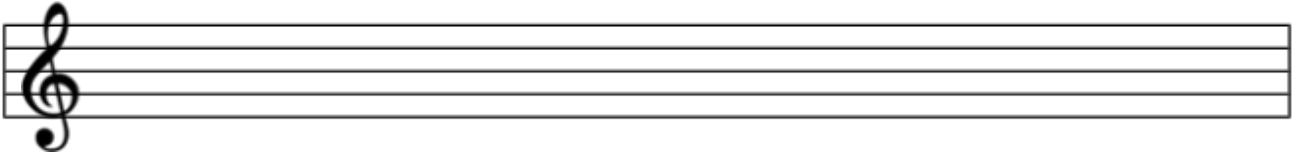
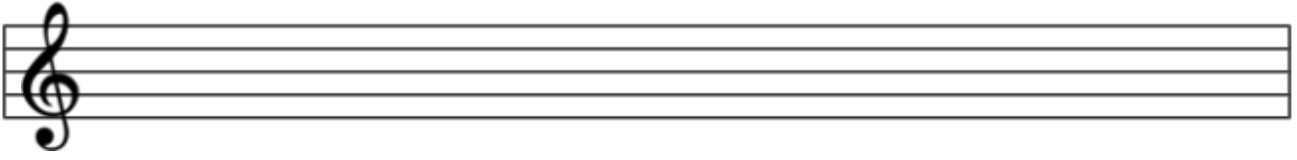
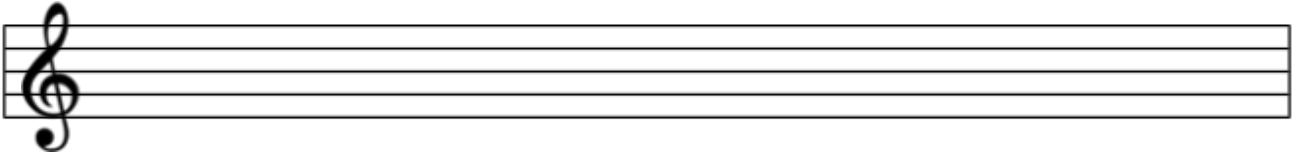
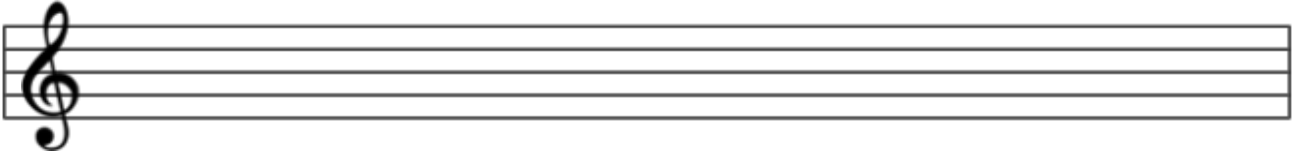
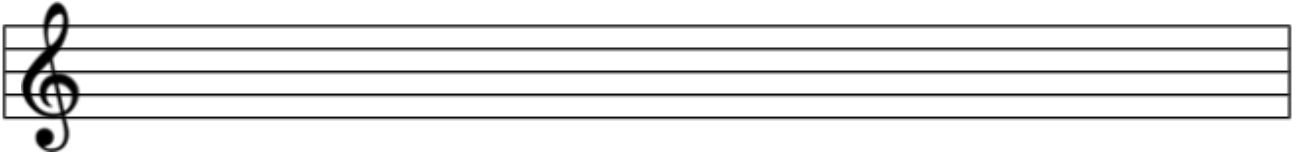
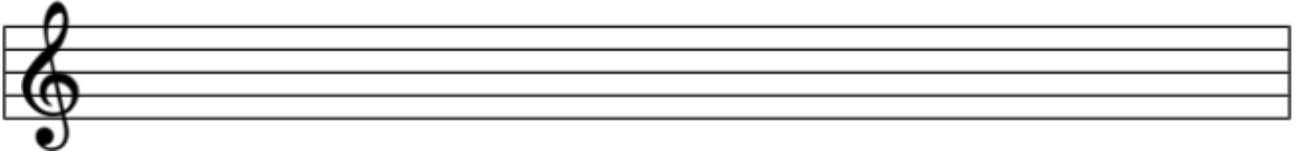
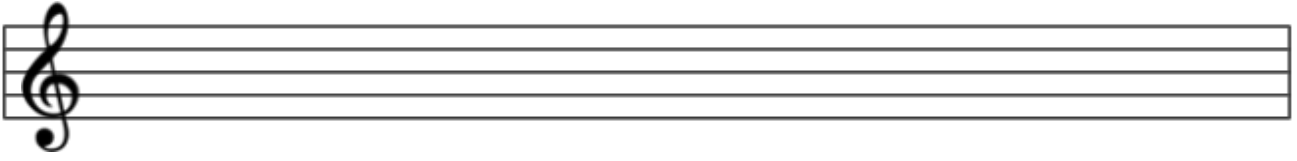
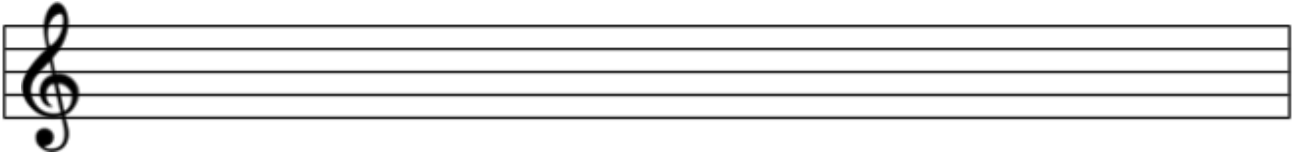
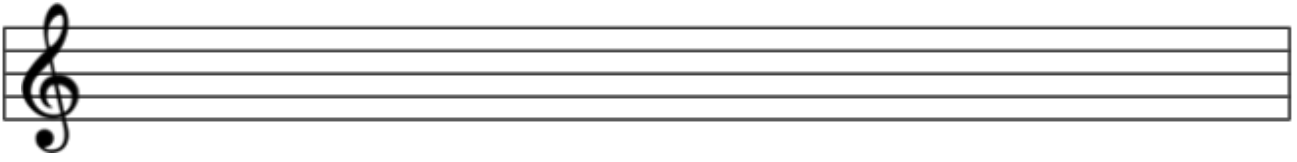












e	T
n	
g	A
a	
w	B
e	

e	T
h	
g	A
a	
e	B

e	T
h	
g	A
a	
e	B

e	T	
h		
g	A	
d		
a	B	
e		

e	T	
h		
g	A	
d		
a	B	
e		

e	T	
h		
g	A	
d		
a	B	
e		

e	T	
h		
g	A	
d		
a	B	
e		

e T
T
g A
a
a B
e

e T
T
g A
a
a B
e

e T
T
g A
a
a B
e

e T
T
g A
a
a B
e

e T
T
g A
a
a B
e

e T
T
g A
a
a B
e

e
h
g
a
e

T
A
B

A horizontal rectangular box containing five horizontal lines. On the left side, the letters 'e', 'h', 'g', 'a', and 'e' are stacked vertically, each aligned with one of the lines. In the center of the box, the letters 'T', 'A', and 'B' are stacked vertically, with 'T' on the top line, 'A' on the second line, and 'B' on the bottom line.

e
h
g
a
e

T
A
B

A horizontal rectangular box containing five horizontal lines. On the left side, the letters 'e', 'h', 'g', 'a', and 'e' are stacked vertically, each aligned with one of the lines. In the center of the box, the letters 'T', 'A', and 'B' are stacked vertically, with 'T' on the top line, 'A' on the second line, and 'B' on the bottom line.

e
h
g
a
e

T
A
B

A horizontal rectangular box containing five horizontal lines. On the left side, the letters 'e', 'h', 'g', 'a', and 'e' are stacked vertically, each aligned with one of the lines. In the center of the box, the letters 'T', 'A', and 'B' are stacked vertically, with 'T' on the top line, 'A' on the second line, and 'B' on the bottom line.

e
h
g
a
e

T
A
B

A horizontal rectangular box containing five horizontal lines. On the left side, the letters 'e', 'h', 'g', 'a', and 'e' are stacked vertically, each aligned with one of the lines. In the center of the box, the letters 'T', 'A', and 'B' are stacked vertically, with 'T' on the top line, 'A' on the second line, and 'B' on the bottom line.

e
h
g
a
e

T
A
B

A horizontal rectangular box containing five horizontal lines. On the left side, the letters 'e', 'h', 'g', 'a', and 'e' are stacked vertically, each aligned with one of the lines. In the center of the box, the letters 'T', 'A', and 'B' are stacked vertically, with 'T' on the top line, 'A' on the second line, and 'B' on the bottom line.

e
h
g
a
e

T
A
B

A horizontal rectangular box containing five horizontal lines. On the left side, the letters 'e', 'h', 'g', 'a', and 'e' are stacked vertically, each aligned with one of the lines. In the center of the box, the letters 'T', 'A', and 'B' are stacked vertically, with 'T' on the top line, 'A' on the second line, and 'B' on the bottom line.

e
h
g
a
e

T
A
B

A horizontal rectangular box containing five horizontal lines. On the left side, the letters 'e', 'h', 'g', 'a', and 'e' are stacked vertically, each aligned with one of the lines. In the center of the box, the letters 'T', 'A', and 'B' are stacked vertically, with 'T' on the top line, 'A' on the second line, and 'B' on the bottom line.